

# Columbus Download Pack



## How to find us

**The pool is located in the Columbus College on Oliver Way in Chelmsford CM1 4ZB**

The pool is located by entering through the main reception and turning left and then immediately right. Please leave your shoes in the entrance area and prams and pushchairs should be left in the corridor outside.

There is plenty of parking inside the school grounds.

Once inside the building, the changing rooms are on your right. The code to get into the changing rooms will be on the door - This is kept closed for safety purposes. Please remove your shoes as you enter the building. This will help to ensure the floors remain clean.

## The Class

Please arrive 10 mins before your class time to allow enough time for changing. If your class is the first class of the day, the doors will open no earlier than 15 minutes before the class start time.

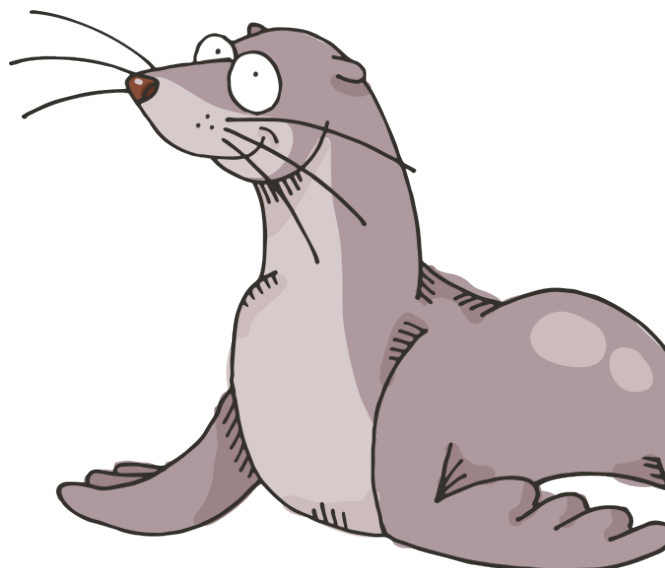
**Please do not take photographs or film lessons** - This is for safeguarding reasons.

## Renewals and Payments

Your space is automatically saved until you have 2 or less weeks left on your account. You will get reminders to renew and top up your credits when you have 3 weeks left and again at 2 weeks. Should you wish to set up a monthly direct debit, do let us know.

You will get an email shortly asking you to register for the Home Portal for Course Pro. This is how you can and pay for more classes.

**We also offer the option to pay by monthly direct debit, if you would prefer to pay this way, just contact the office who can set this up for you.**



## Equipment

We will provide the equipment for your lesson. Should you wish to purchase your own or any additional items you can source your own or buy them here:

[www.miniswimming.co.uk/swim-shop](http://www.miniswimming.co.uk/swim-shop)

Items can only be collected from the Stanway pool (Colchester CO3 0AB) Mon - Sun 9.00-6.00

## Happy Nappies

**We require all children who are not 100% accident free to wear a Happy Nappy.** This is a reusable swim nappy that looks like a pair of shorts/swimming costume but because it is designed to be fitted around the legs and tummy it doesn't allow anything that escapes a normal swim nappy to enter the pool. Unfortunately swimming costumes that have built in nappies or the disposable swim nappies aren't sufficient as they do leak and a leak would lead to a 48 hour pool closure. The nappies are made by Splashabout.

You will need a disposable swim nappy underneath so you can at least dispose of the bulk of any soil rather than hand washing.

## Keeping in the loop!

We put a lot of updates and notifications on our Facebook page so please follow us for all the latest news, WOW moments, photos and more!

[www.facebook.com/miniswimchelmsford](https://www.facebook.com/miniswimchelmsford)

If you have any questions please let us know. Please see our full terms and conditions on our website, [www.miniswimming.co.uk/terms-conditions](http://www.miniswimming.co.uk/terms-conditions) We look forward to meeting you soon.

